

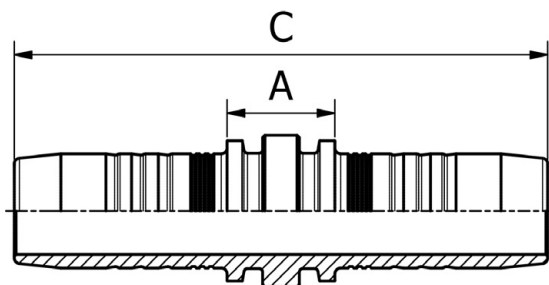
TAIL

M..IP..

WELDING TAIL

FITTINGS 172

PART. REF.	HOSE BORE			DIMENSIONS mm							
	DN	Dash	inch	B	A	C	D				
M03IP06	5	- 3	3/16"	6.0	11.5	5.0	10.0				
M04IP08	6	- 4	1/4"	8.0	13.0	5.0	12.0				
M05IP10	8	- 5	5/16"	10.0	13.5	6.0	14.0				
M06IP12	10	- 6	3/8"	12.0	13.5	6.0	16.0				
M06IP14	10	- 6	3/8"	14.0	13.5	6.0	18.0				
M08IP15	12	- 8	1/2"	15.0	14.0	6.0	20.0				
M08IP16	12	- 8	1/2"	16.0	14.0	6.0	20.0				
M10IP18	16	- 10	5/8"	18.0	15.0	7.0	23.0				
M12IP22	19	- 12	3/4"	22.0	16.0	7.0	26.0				
M16IP28	25	- 16	1"	28.0	18.5	8.0	34.0				
M20IP35	31	- 20	1.1/4"	35.0	20.5	9.0	40.0				
M24IP40	38	- 24	1.1/2"	40.0	21.5	9.0	50.0				
M32IP50	51	- 32	2"	50.0	23.0	10.0	60.0				
M40IP60	63	- 40	2.1/2"	61.0	19.0	7.0	73.0				
M48IP70	76	- 48	3"	70.0	38.0	10.0	89.0				



DOUBLE CONNECTOR

M10050

DOUBLE CONNECTOR

PART. REF.	HOSE BORE			DIMENSIONS mm							
	DN	Dash	inch	B	A	C					
M10050-03-03	5	- 3	3/16"	3.0	15.5	58.2					
M10050-04-04	6	- 4	1/4"	4.0	14.0	69.0					
M10050-05-05	8	- 5	5/16"	5.5	14.0	70.0					
M10050-06-06	10	- 6	3/8"	7.0	14.5	73.5					
M10050-08-08	12	- 8	1/2"	9.3	15.5	77.9					
M10050-10-10	16	- 10	5/8"	12.5	15.5	84.0					
M10050-12-12	19	- 12	3/4"	15.0	18.5	91.5					
M10050-16-16	25	- 16	1"	19.8	22.5	119.0					
M10050-20-20	31	- 20	1.1/4"	26.0	23.0	128.1					
M10050-24-24	38	- 24	1.1/2"	32.0	23.5	147.5					